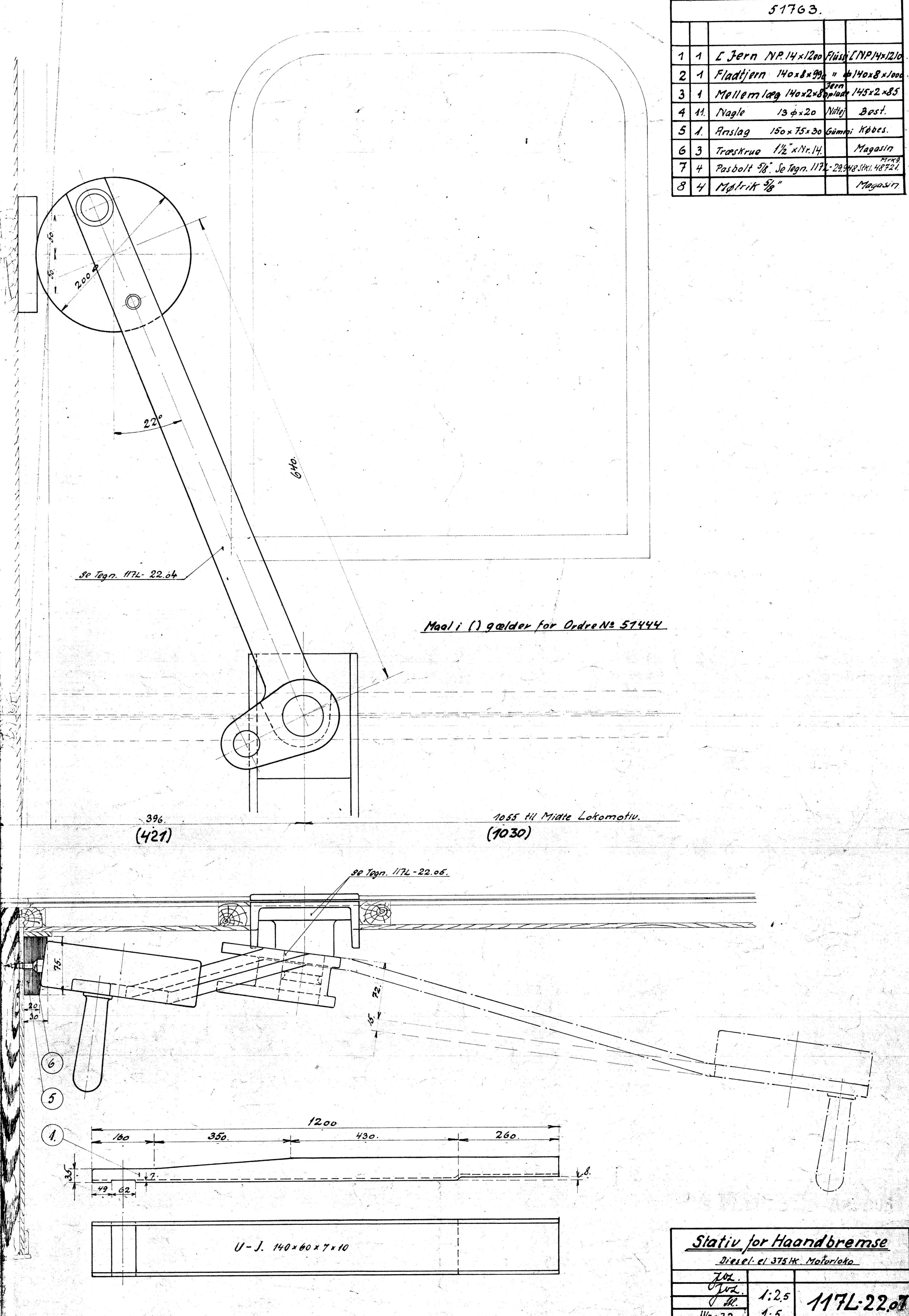
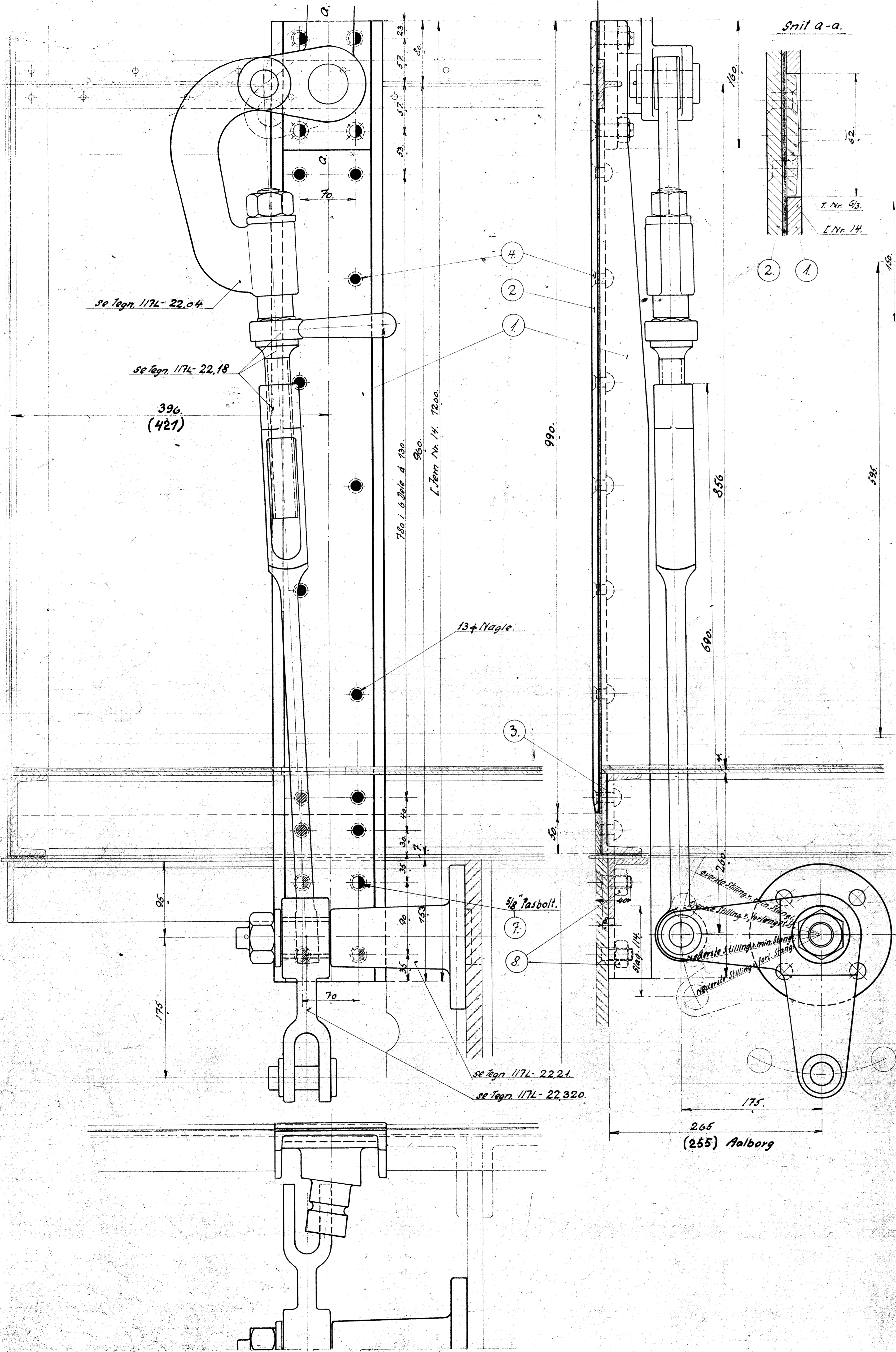


51763.

1	1	L Jern NP. 14 x 1200	Fluider L NP 14 x 1200
2	1	Fladtjern 140 x 8 x 99	" " " 140 x 8 x 1000
3	1	Mellem lag 140 x 2 x 8	Spindel 145 x 2 x 85
4	11	Nagle 13 φ x 20	Nilly Bøst.
5	1	Arslag 150 x 75 x 30	Gummi Købes.
6	3	Træktræue 1 1/2 x 11 x 14	Magasin
7	4	Passbolt 5/8"	Se tegn. 1172-29.448 SKI 4872.
8	4	Møtrik 3/8"	Magasin



<b>Stativ for Haandbremse</b>		
Drevet af 375 Hk. Motorloko		
702	1:2.5	1172-22.07
703	1:5	
1 1/2-32		